

MF Series



MF series applies Molded cartridge filter, Silo top dust collector with High pressure, medium airflow. The silo top dust collector is designed for dedusting silos and bunkers that are used for the storage of bulk solids. (carbon, silica, cement, grain, ash, lime, food products, etc.). The MF is installed on the silo or the upper part of the tank and used for extracting air. Silo top dust collectors are installed through a connecting flange.



Molded filter



Pulse jet



General dry dust



Max Filter area

Compact, cylindrical body is ideal for intake of pneumatic conveying and designed for dedusting silos and bunkers that are used for the storage of bulk solids.

- Optimum for silo and tank air releasing.
- High pressure, medium air volume type
- Small, high-pressure, medium airflow machine for collecting dust.
- Bottom flange design (with an airflow capacity of 75m³/min, these small, bottom flange models can be used at hopper/silo/conveyor junctions for high-density dust collection)

Molded cartridge filter



Material: Polyester
Surface treatment: –
Corresponding models: MF
Application: General dried particles (particle diameter about 10 μ m)

Features

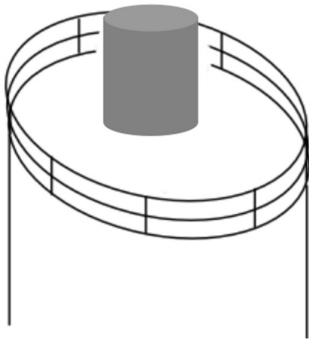
- For dust having a particle diameter of about 10 μ m.
- Collecting efficiency: Good, Particle diameter about 10 μ m
- Heat resistant temperature (F): Normal temperature 40°C (104°)
- Dust removal: Pulse jet

Various type of filter is available

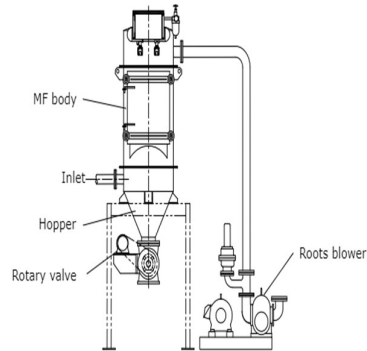


the various idea for use

On top of Silo



High-pressure continuous vacuuming system

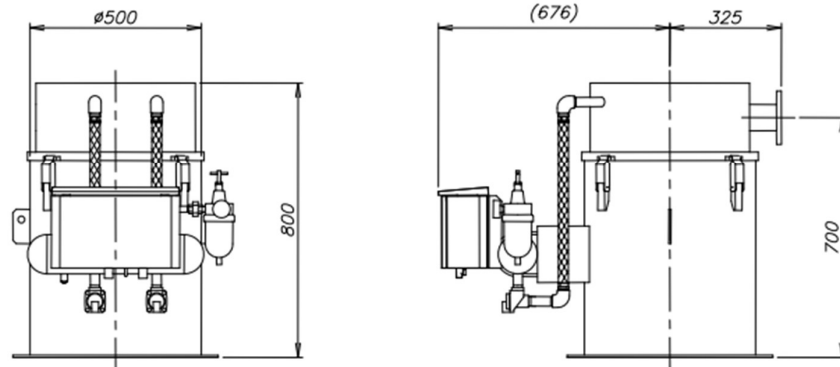


Sample Installation



Dimensions

MF-2003



SPECIFICATIONS

Model	Dimensions			Filter Area m ²	No of Filter pcs	Weight kg
	A	B	H			
MF-2003	Φ500	Φ600	800	4.5	3	-
MF-2004	Φ600	Φ700	1205	6	4	-
MF-2007	Φ765	Φ865	1250	10.5	7	-
MF-2012	Φ1100	Φ1200	1350	18	12	-