

WRT Series – The Bestseller among large-scale dust collector



WRT Series is Medium Pressure High Airflow Capacity. A wide variety of filter types available for a wide range of applications. The best-selling high airflow dust collector.

WRT Series



Woven filter



Pulse jet



General dry dust



Max Filter area

WRT-ST Series



Molded filter



Pulse jet



General dry dust



Max Filter area

Features:

WRT Series Medium Pressure High Airflow Capacity.

- Equipped with Airflow Regulation Mechanism.
- When dust-filled air enters the top of the dust collector, it first passes through the unit's airflow regulation mechanism, where gravity causes the particles to collide and settle. The result is an even, regulated airflow.
- Coarse particle separation is improved.
- Suction airflow prevents collected particles in the hopper from scattering and prevents filter friction and damage.
- Allows uniform dust layer collection.

Uses

Chemical plants where filter clogging frequently occurs due to particle fineness; Crushing and drying operations with materials that generate a large volume of particles; Product material particle recovery; Various furnaces whose fine particles tend to accumulate on the filter.



Various filter is available



Material: Polyester
Surface treatment: Singed
Corresponding models: [WRT](#), [BV](#) and [CT](#)
Application: General dried particles (particle diameter about 10µm)

Features

- General dried particles (particle diameter about 10µm)
- Standard filter. The most widely used item.
- Collecting efficiency: Good
- Heat resistant temperature (F): Normal temperature 120°C (248°)
- Acid-resistant: Average
- Alkali-proof: Average



Finefil



Tetonon



Pyrene



PPS



PTFE



P84



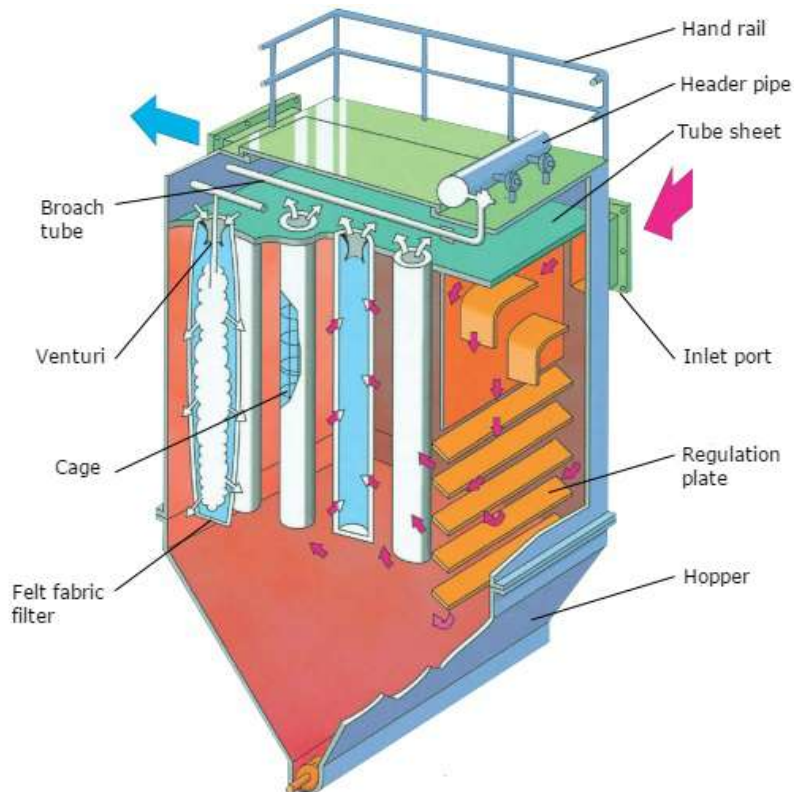
Tefaire



Heat-resistant

Internal Structure

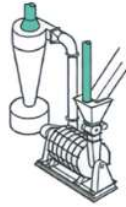
The top suction method & Pre-duster mechanism capture dust heavy dust before reach to filter. The mechanism is reducing the load of the filter.



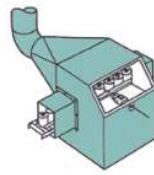
Application



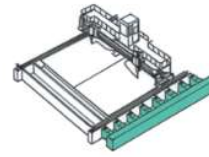
Arc welding



Crushing machine



Thermal spraying work



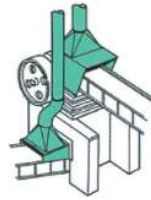
Fusion machine



Sanding /crushing work



Loading raw materials work



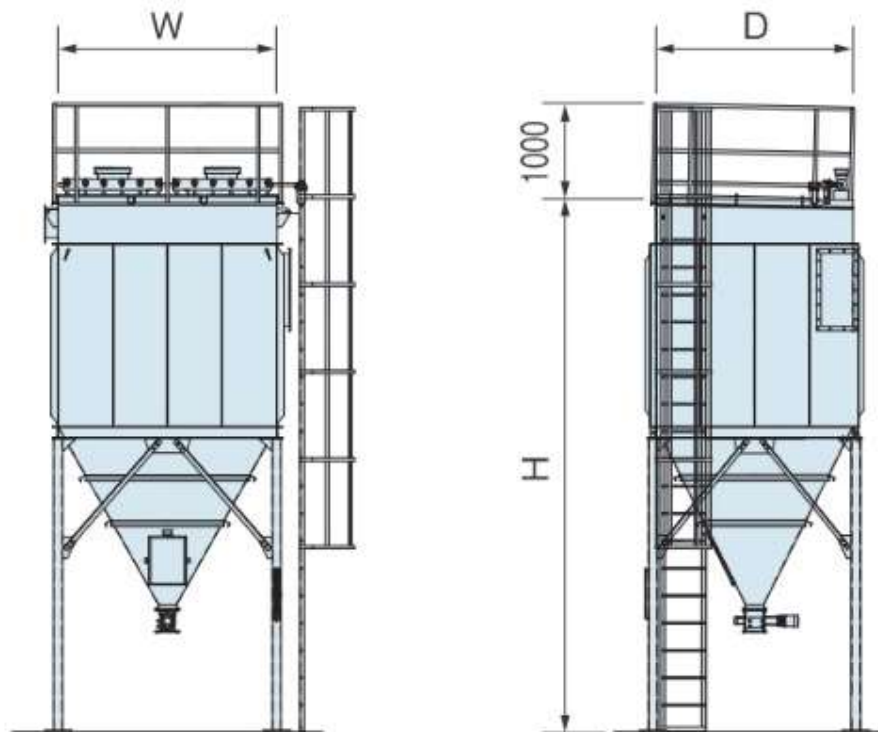
Belt conveyor



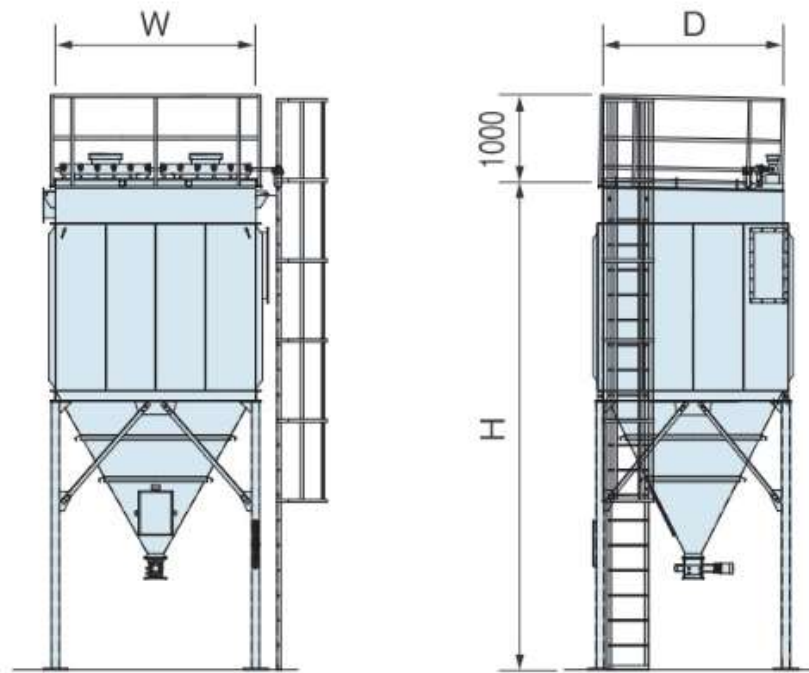
Melting Furnaces

External View

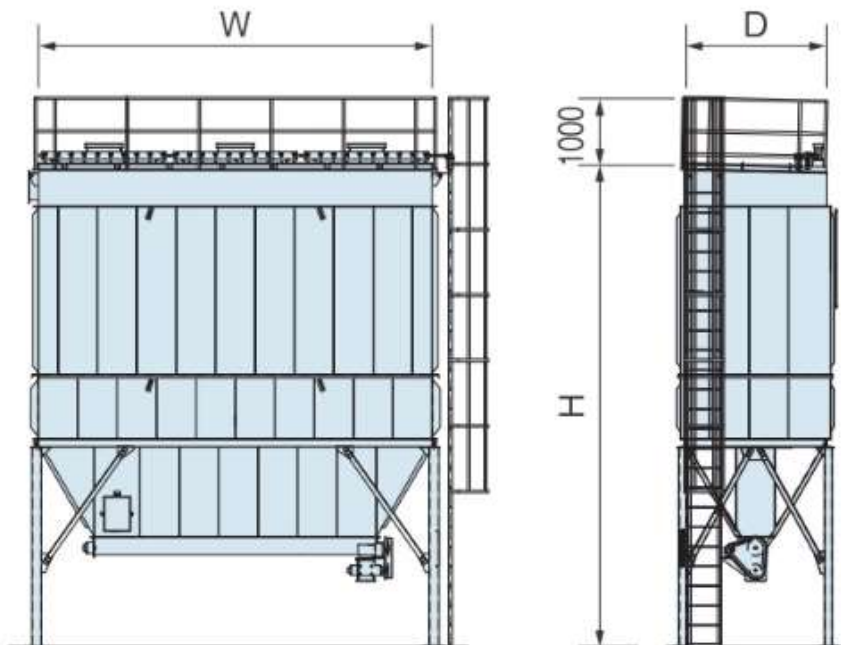
WRT-3000/5000



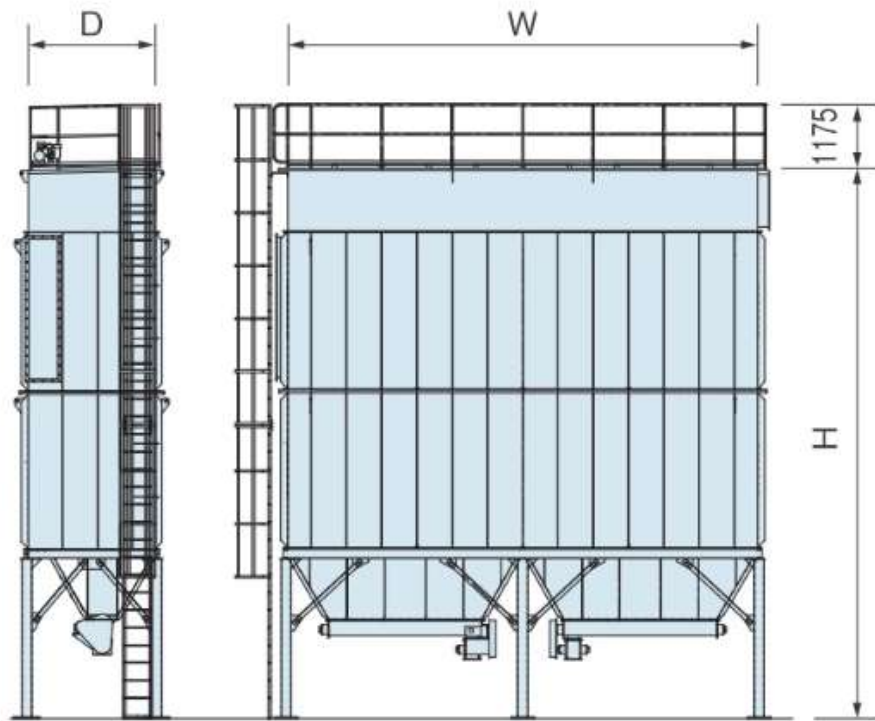
WRT-3000/5000



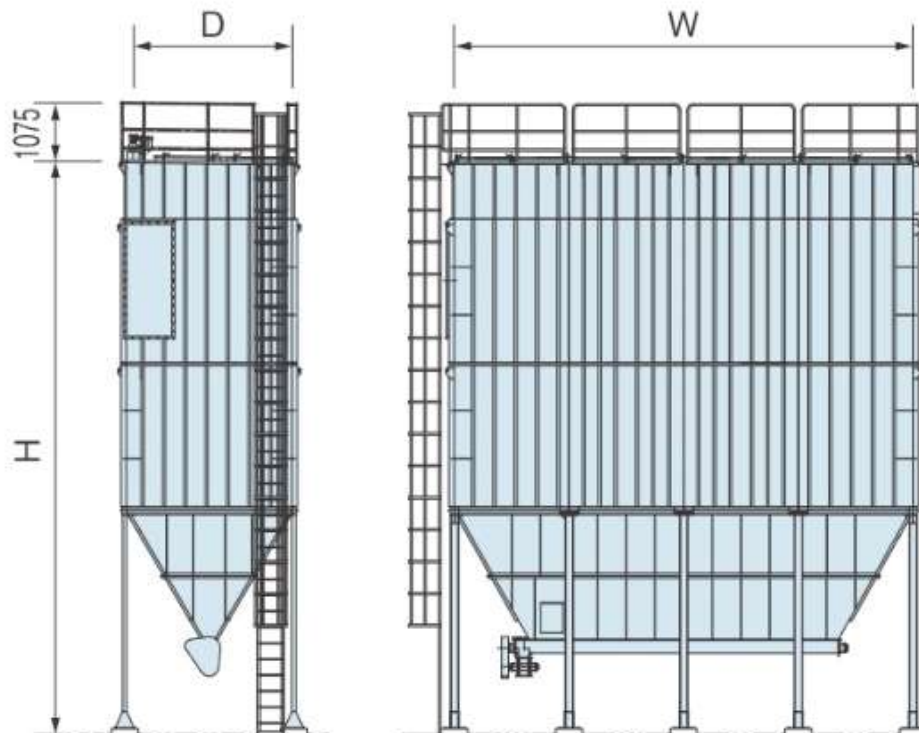
WRT-7000



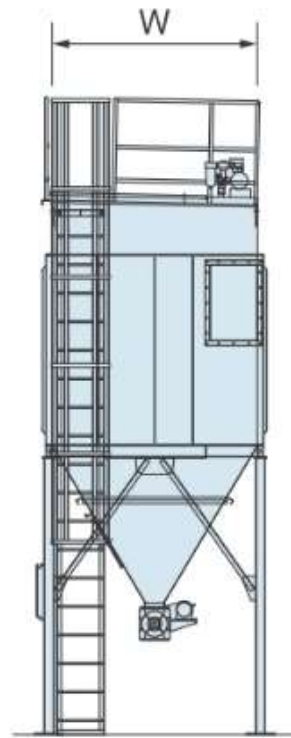
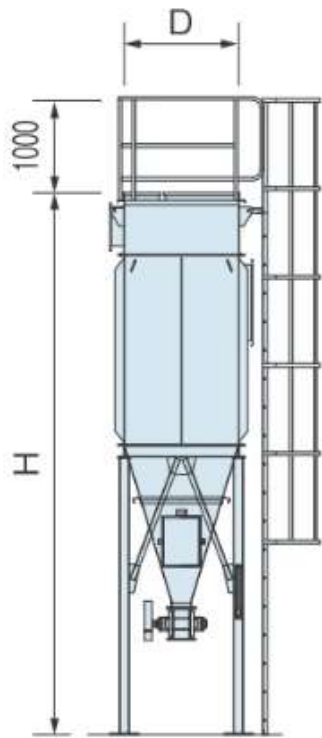
WRT-S10000



WRT-19000



WRT-ST



SPECIFICATIONS

WRT-WRT-3000/5000 Series (with a separate fan)

Model	Dimension (Unit:mm)			Filter Area m2	No of Filter pcs	Weight kg
	W	D	H			
WRT-3054B	1200	1810	5185	51.5	54	1700
-3072B	1600	1810	5185	68.6	72	2000
-3090B	2000	1810	5185	85.8	90	2200
-3108B	2400	1810	5779	102.9	108	2500
-3054T	1200	2160	5579	51.5	54	1900
-3072T	1600	2160	5579	68.6	72	2200
-3090T	2000	2160	5579	85.8	90	2500
-3108T	2400	2160	5869	102.9	108	2800
-5054B	1200	1810	5755	67.6	54	1900
-5072B	1600	1810	5755	90.1	72	2200
-5090B	2000	1810	5755	112.7	90	2500
-5108B	2400	1810	6345	135.2	108	2700
-5054T	1200	2160	6149	67.6	54	2000
-5072T	1600	2160	6149	90.1	72	2300
-5090T	2000	2160	6149	112.7	90	2600
-5108T	2400	2160	6439	135.2	108	3100
-3126B	2800	1810	5404	120.1	126	2800
-3144B	3200	1810	5404	137.2	144	3200
-3126T	2800	2160	5704	120.1	126	3200

WRT-7000 Series (with a separate fan)

Model	Dimension (Unit:mm)			Filter Area m2	No of Filter pcs	Weight kg
	W	D	H			
WRT-7080	2000	2160	7254	132.7	80	3300
-7096	2400	2160	7644	160.3	96	3800
-7112	2800	2160	7794	182.5	112	4300
-7128	3200	2160	8054	210.1	128	4900
-7144	3600	2160	7379	237.8	144	5300
-7160	4000	2160	7379	265.4	160	5800
-7176	4400	2160	7379	287.6	176	6200
-7192	4800	2160	7379	315.2	192	6600
-7208	5200	2160	7379	342.8	208	7100
-7224	5600	2160	7379	365.1	224	7500
-7240	6000	2160	7379	392.7	240	8000

WRT-S10000 Series (with a separate fan)

Model	Dimension (Unit:mm)			Filter Area m2	No of Filter pcs	Weight kg
	W	D	H			
WRT-S10112	2800	2160	8825	270.6	112	6600
-S10128	3200	2160	8825	310.7	128	7200
-S10160	4000	2160	8825	390.9	160	8500
-S10192	4800	2160	8825	461.1	192	10000
-S10224	5600	2160	8825	541.2	224	11400
-S10256	6400	2160	9025	621.5	256	13100
-S10288	7200	2160	9025	691.6	288	14400
-S10320	8000	2160	9025	771.8	320	15900

WRT-19000 Series (with a separate fan)

Model	Dimension (Unit:mm)			Filter Area m2	No of Filter pcs	Weight kg
	W	D	H			
WRT-19320	7000	3100	10655	844.4	320	20800
-19360	7800	3100	10655	950	360	22800
-19400	8600	3100	10655	1055.6	400	25400

WRT-19000 Series (with a separate fan)

Model	Dimension (Unit:mm)			Filter Area m2	No of Filter pcs	Weight kg
	W	D	H			
WRT-3042ST	1200	2160	6704	155.4	42	1900
-3056ST	1600	2160	6704	207.2	56	2200
-3070ST	2000	2160	6704	259	70	2500
-3084ST	2400	2160	6994	310.8	84	2900
-5042ST	1200	2160	7499	222.6	42	2100
-5056ST	1600	2160	7499	296.8	56	2400
-5070ST	2000	2160	7499	371	70	2800
-5084ST	2400	2160	7789	445.2	84	3200
-5098ST	2800	2160	7624	519.4	98	3700
-5112ST	3200	2160	7624	593.6	112	4000
-5126ST	3600	2160	7774	667.8	126	4400
-5140ST	4000	2160	7774	742	140	4800
-5154ST	4400	2160	7774	816.2	154	5000