

VNA Series – The best of basics dust collector –



Best seller Standard Dust Collector. The strength of the "basics" transcends time. This is a standard model that thoroughly pursues the basics. VNA Series standard models are based on Amano's time-proven dust collecting technology.



Canvas filter



Manual Shaking



General dry dust



Max. airflow



Premium efficiency
motor

Features:

- Compact design
- Catch micron-sized particles
- Fig-efficient filter material
- Manual shaking Filter cleaning
- Lightweight plastic dust tray
- Lengthy maintenance free operation
- Easy operation
- Noise-proof design for quiet operation
- Collected dust prevented from being scattered



- **Canvas filter**



Material: Cotton

Surface treatment: –

Corresponding models: VNA

Application: General dried particles (particle diameter about 10 μ m)

Features:

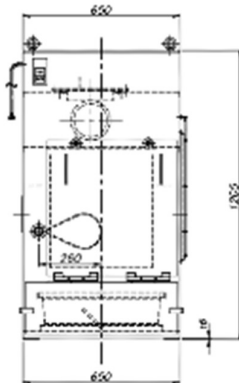
- For dust having a particle diameter of about 10 μ m.
- Collecting efficiency: Good, Particle diameter about 10 μ m
- Heat resistant temperature (F) : normal temperature 40°C (104°)
- Dust removal: Vibration

- **Easy filter replacement**



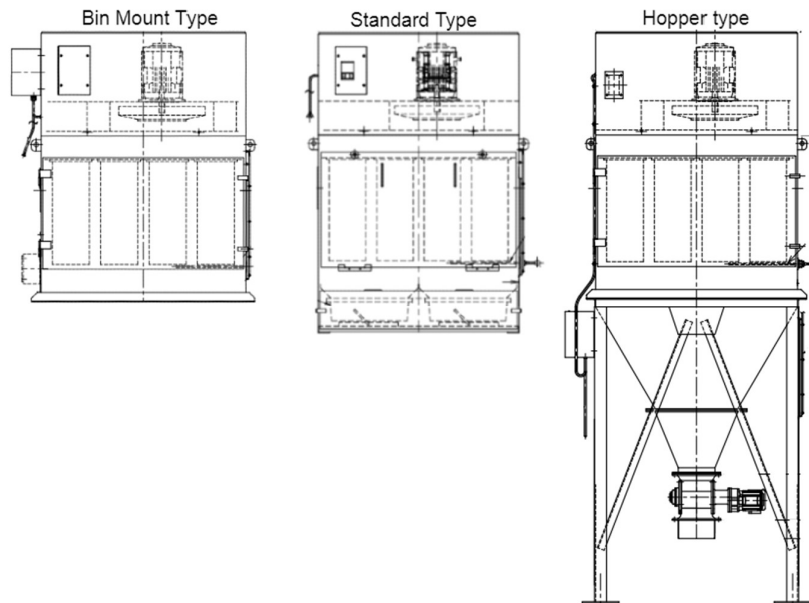
VNA units employ plate filters, giving them a wide filter area, while enabling them to collect even micron-sized particles with tremendous efficiency. Filters are one-piece units, allowing easy replacement.

- **Compact Design**

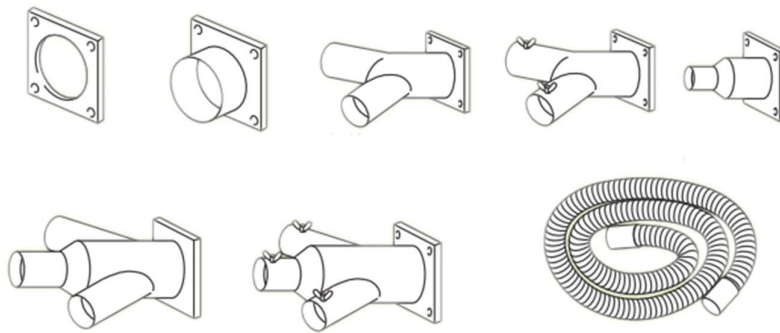


The compact design of VNA Series Dust Collectors requires very little installation space. Inlet ports on either side of the units can be utilized.

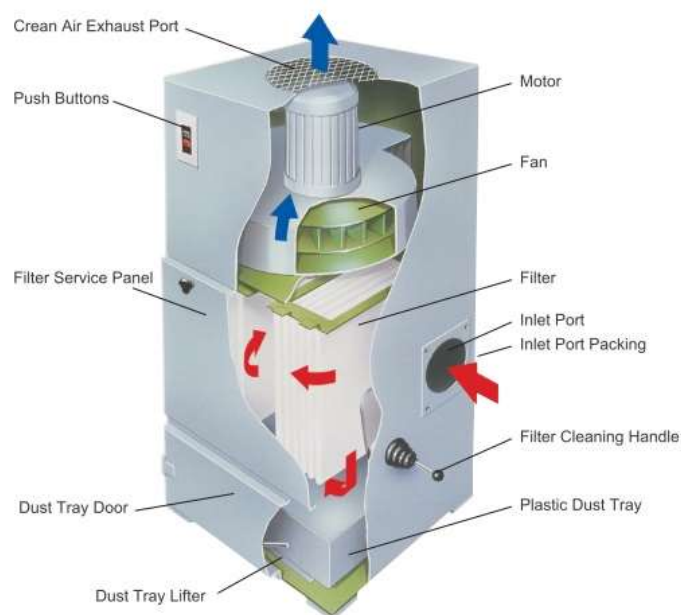
- **Various Combination**



- **Various Options and Accessories**



- **Internal Structure**

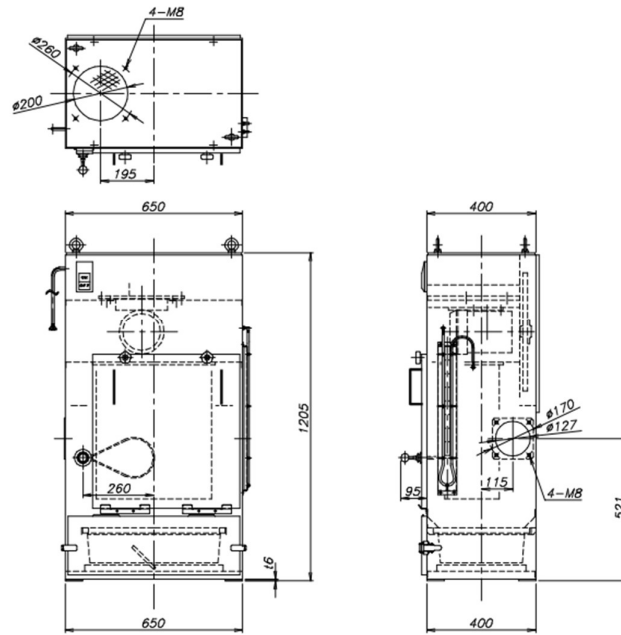


- External View

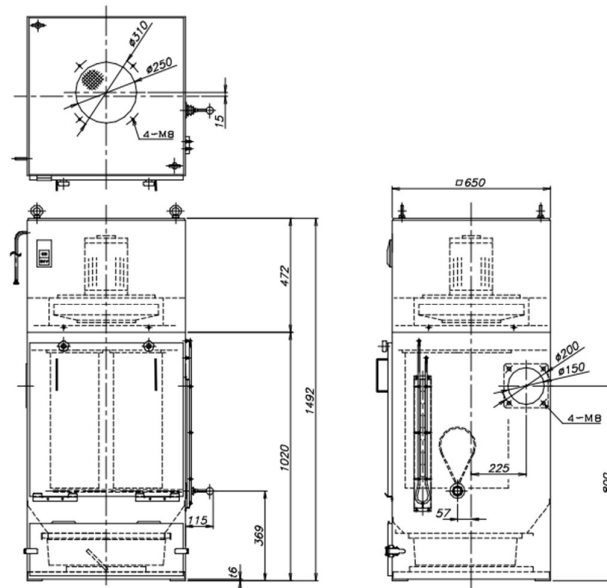
/>



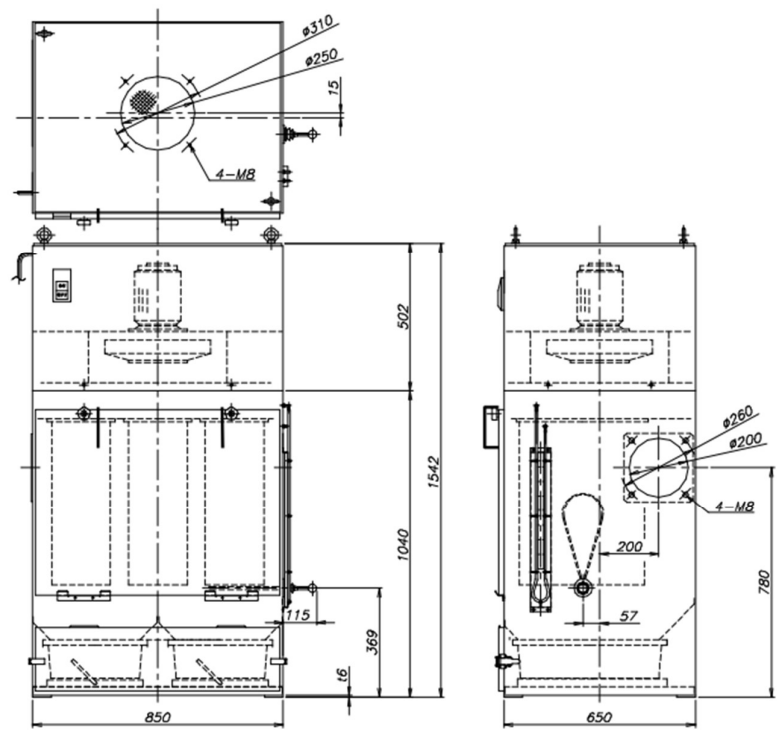
VNA-15



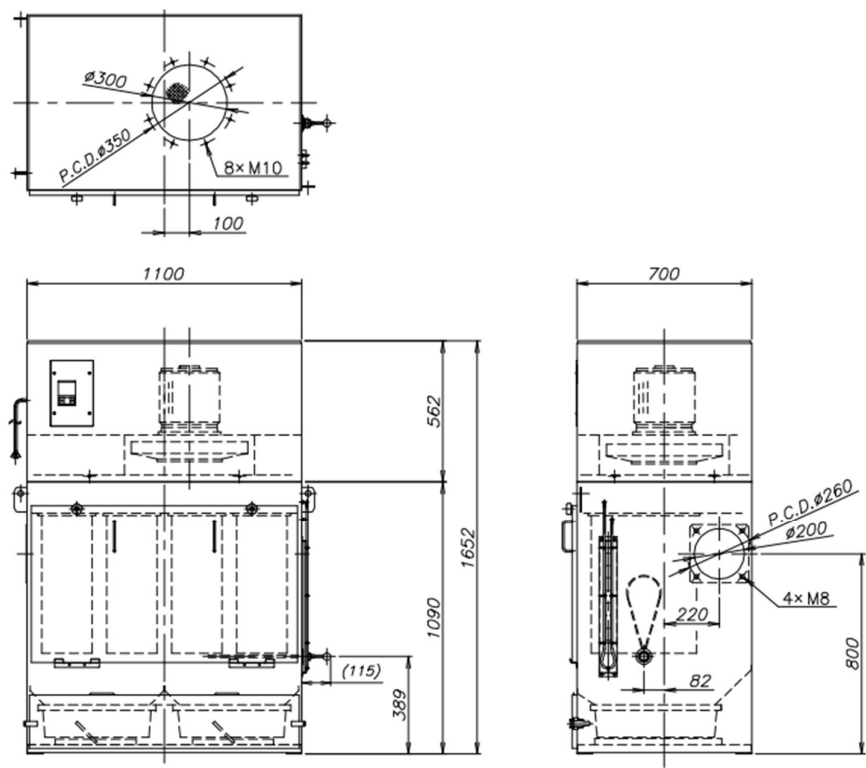
VNA-30



VNA-45



VNA-60



- APPLICATION



Powder Loading



Bagging operation



Drilling Machine



Cutting Machine



Cutting operation

Specification

| Particular | Unit | VNA-15 | VNA-30 | VNA-45 | VNA-60 | VNA-120 |
|----------------------|--------|--------------|--------------|-------------|---------------|----------------|
| Power Supply | Volt | 220 | 220 | 220 | 220 | 220 |
| Frequency | Hz | 60 | 60 | 60 | 60 | 60 |
| Phase | | 3P | 3P | 3P | 3P | 3P |
| Output | kw/hp | 0.75/1 | 1.5/2 | 2.2/3 | 3.7/5.0 | 7.5/10 |
| Max Airflow | m³/min | 12 | 28 | 40 | 55 | 110 |
| Max. Static Pressure | kPa | 2.45 | 2.55 | 2.55 | 2.90 | 3.20 |
| Filter Area | m² | 4.5 | 9.0 | 13.5 | 18.0 | 36.0 |
| Suction Port Ø | mm | 127 | 150 | 200 | 200 | 300 |
| Dimensions (WxDxH) | mm | 650x400x1205 | 650x650x1492 | 850x650x142 | 1100x700x1652 | 1174x1464x1796 |
| Weight | kg | 92 | 145 | 180 | 270 | 510 |